

12-inch/15-inch Color LCD Marine Radar

MDC-2200_{series} / 2500_{series}

Fabulous performance!

- Reliable display of small targets and stable target presentation.
- True trail function, to display moving target trails only, realizes clear discrimination of moving targets apart from land and buoys.
- ATA with up to 50 targets as standard.
- Map overlay with C-Map chart (NT+ or NT MAX) as standard function.
- Dual station, operational with two display units on one antenna-scanner unit. Practical on a double ended boat etc.
- AIS interface up to 100 targets as option.



12-inch MDC-2200 series

MDC-2240: 4 kW, 3 ft / 4 ft, 48 nm
 MDC-2260: 6 kW, 4 ft / 6 ft, 72 nm
 MDC-2210: 12 kW, 4 ft / 6 ft, 72 nm
 MDC-2220: 25 kW, 6 ft / 9 ft, 96 nm



15-inch MDC-2500 series

MDC-2540: 4 kW, 3 ft / 4 ft, 48 nm
 MDC-2560: 6 kW, 4 ft / 6 ft, 72 nm
 MDC-2510: 12 kW, 4 ft / 6 ft, 72 nm
 MDC-2520: 25 kW, 6 ft / 9 ft, 96 nm



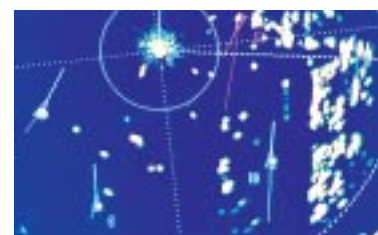
True trail function

Displays moving target trails only to easily discriminate moving targets from motionless targets like land and buoys.



ATA function

Moving direction and speed of up to 50 targets can be displayed with vector.



AIS interface (Option)

Interface with AIS (Automatic Identification System) is available as an option. AIS provides information such as vessel name, position, course, speed, distance from your ship. (AIS receiver required)

SPECIFICATIONS

Antenna-Scanner unit

Model	MDC-2240/2540		MDC-2260/2560		MDC-2210/2510		MDC-2220/2520	
Antenna length	3 feet	4 feet	4 feet	6 feet	4 feet	6 feet	6 feet	9 feet
Beam width	Horizontal		2.5°	1.8°	1.8°	1.2°	1.2°	0.8°
	Vertical		22°	22°	22°	22°	22°	25°
Rotation	24 rpm or 48 rpm							
Peak power output	4 kW		6 kW		12 kW		25 kW	

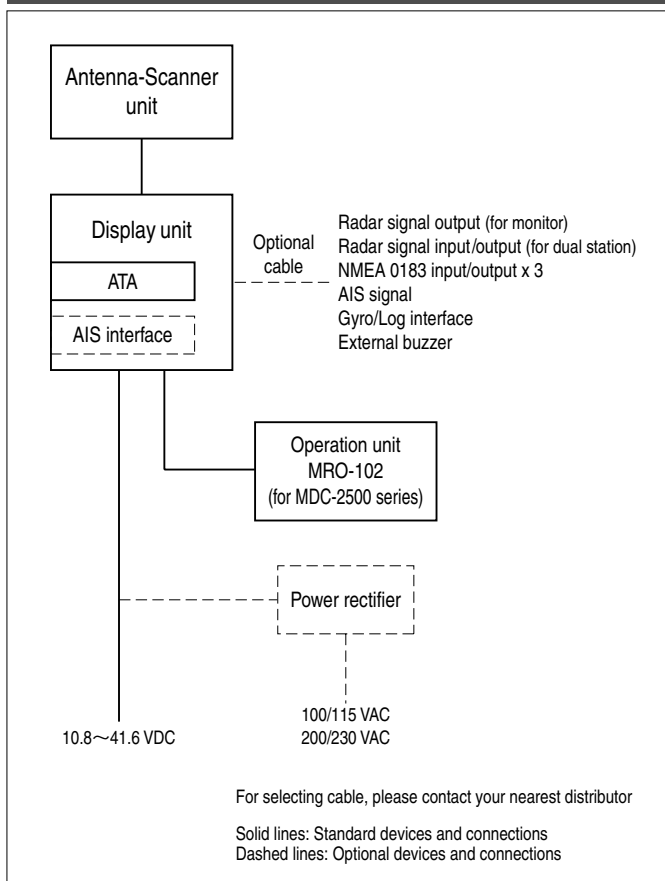
Display unit

Model	MDC-2240/2260/2210/2220		MDC-2540/2560/2510/2520	
Display size/type	12.1" color LCD		15" color LCD	
Resolution	1024 x 768 pixels			
Display color	White/Green/Yellow/Multi			
Off-centering	Max. 66%			
Echo area	2 types (Full screen, Inside of effective diameter)			
Range data accuracy	8 meters or 1% of the range scale selected, whichever is the greater			
Range scales	0.125 to 48 nm	0.125 to 72 nm	0.125 to 72 nm	0.125 to 96 nm
Presentation modes	Head-up, North-up*, Course-up*, True motion**			
Other functions	Day/Night mode, VRM 2 marks, EBL 2 lines, Parallel cursor, Alarms, Track, Own track, Interference rejection, Mark, Route, Zoom, Dual station, Monitor output, External buzzer			
NMEA input/output	3 CH			
Power supply	10.8 to 41.6 VDC (25 kW: 21.6 to 41.6 VDC)			
AIS interface	100 Targets (Option)			
ATA	50 targets			
Map overlay	C-Map NT+ / NT MAX (Owner supplied)			
Operating temperature	-15°C to +55°C			

* Requires heading signal input

** Requires heading signal input and speed signal input

CONNECTIONS



EQUIPMENT LIST

Standard Equipment

Antenna	RW701A-03	3 feet
	RW701A-04	4 feet
	RW701A-06	6 feet
	RW701A-09	9 feet
Scanner	RB716A	4 kW
	RB717A	6 kW
	RB718A	12 kW
	RB719A	25 kW
Display unit	MRD-101	For MDC-2200 series
	MRD-102	For MDC-2500 series
Operation unit	MRO-102	For MDC-2500 series
Connecting cable	242J159098B	15 m with connectors on both ends
DC power cable	CW-259-2M	
Spare parts kit, Installation material, Operation manual		

Option

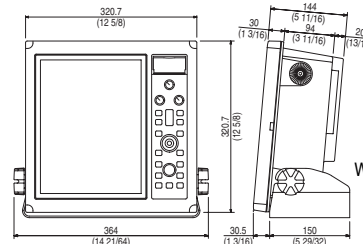
AIS interface, Gyro/Log interface, Power rectifier, AC power cable
Connecting cable (20 m / 30 m), Connecting cable for external monitor
External buzzer

DIMENSIONS AND WEIGHT

Display unit

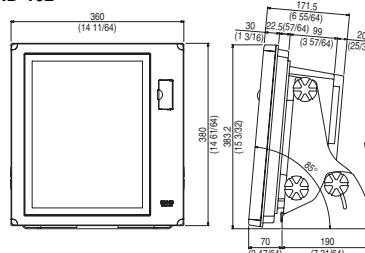
Unit: mm (inch)

MRD-101



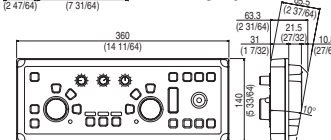
Weight: 8 kg (17.6 lb)

MRD-102



Weight: 12.4 kg (27.3 lb)

MRO-102

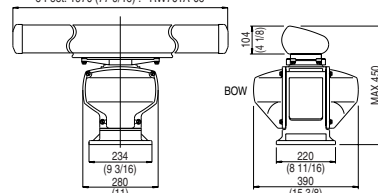


Weight: 2 kg (4.4 lb)

Antenna-Scanner unit

RB716A/717A/718A

3 Feet: 1034 (40 11/16): RW701A-03
4 Feet: 1346 (53): RW701A-04
6 Feet: 1970 (77 9/16): RW701A-06

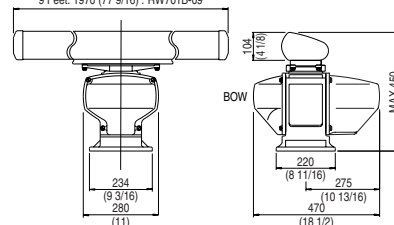


Weight:

RB716A
21 kg (46 lb) with RW701A-03
22 kg (49 lb) with RW701A-04
RB717A/718A
23 kg (51 lb) with RW701A-04
25 kg (56 lb) with RW701A-06

RB719A

6 Feet: 1970 (77 9/16): RW701A-06
9 Feet: 1970 (77 9/16): RW701B-09



Weight:

29 kg (64 lb) with RW701A-06
33 kg (73 lb) with RW701B-09

• Design and specifications are subject to change without notice.

KODEN Kodon Electronics Co., Ltd.

Tamagawa Office:

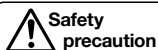
2-13-24 Tamagawa, Ota-ku, Tokyo, 146-0095 Japan
Tel: +81-3-3756-6501 Fax: +81-3-3756-6509

Uenohara Office:

5278 Uenohara, Uenohara-shi, Yamanashi, 409-0112 Japan
Tel: +81-554-20-5860 Fax: +81-554-20-5875

overseas@koden-electronics.co.jp

www.koden-electronics.co.jp



Safety precaution

To ensure proper and safe use of the equipment, please carefully read and follow the instructions in the Operation Manual.

For details, please contact:

Agenzia
ufficiale per
l'Italia:

Apelmar
technology s.r.l.

Telefono 010 870058 r.a.
Telefax 010 870248
e-mail: apelmar@koden.it
<http://www.koden.it>