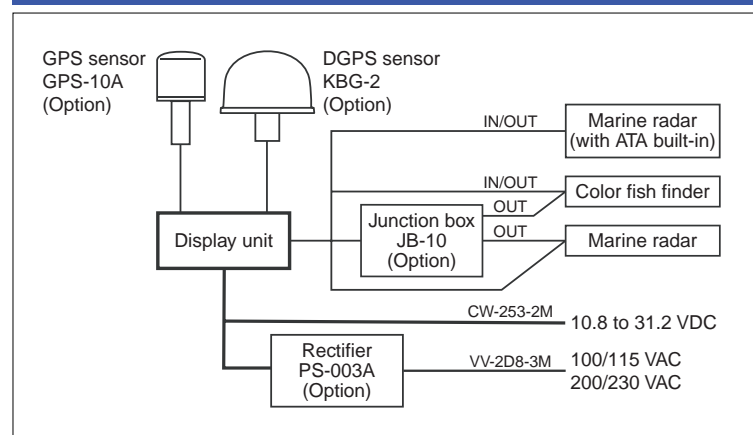


SPECIFICATIONS

Type name	GTD-110/150		
Display	GTD-110	10.4 inch High Brightness TFT Color LCD	
	GTD-150	15 inch High Brightness TFT Color LCD	
Map mode	Mercator projection		
Display mode	North-up, East-up, South-up, West-up, Course-up (Waypoint), Head-up and Centered North-up		
Track zooming range	0.5 to 9,600 nm (or 1 to 17,780 km)		
Display	Effective map creation area	Below latitude 75 degree	
	Plotting interval	Time	1, 2, 5, 10, 20, 30, 60, 120, 300, 600 sec
		Distance	0.01, 0.02, 0.05, 0.1, 0.2, 0.5, 1.0, 2.0, 5.0, 10.0 nm (km)
	No. of plots	2,000, 4,000, 7,000 (maximum plot) x 7 blocks	
Track color	7 colors		
Position data display	Lat/lon, Loran-C LOP		
Navigation data display	Own ship's position, Own ship's course, Own ship's speed, Waypoint position, Waypoint bearing, Waypoint distance, POB position, POB bearing, POB distance, Cursor position, Cursor bearing, Cursor distance		
Position registration	8,300		
Mark color	7 colors		
Mark shape	○, □, ▽, ×, ☆, ◇, △		
	(The marks ☆, ◇, △ are only useable in Mark Editing mode)		
Mapping	Mapping nodes	500 points x 7 blocks	
	Display color	7 colors	
Other ships plot	10 ID x 1000 points		
Route memory	50 routes x 50 waypoints		
Chart	C-Map NT+		
Data card	C-Map User data card		
Alarm	Arrival, POB, Cross track error		
Positional correction	By cursor or by lat/long data		
Magnetic compass correction	Manual		
Input data format	NMEA 0183 Ver 2.0/1.5 (GGA, GLL, VTG, ZDA, RMC, MSS, MTW, TTM)		
Output data format	NMEA 0183 Ver 2.0 (APB, GGA, GLL, VTG, XTE, ZDA, GTD)		
Memory backup	By Lithium battery (for SRAM backup) and Non-volatile ROM		
Other functions	Loran-C LOP, Ring markers		
Power supply voltage	10.8 to 31.2 VDC		
Power consumption:	GTD-110	Less than 20 W (at 24 VDC)	
	GTD-150	Less than 40 W (at 24 VDC)	
Operating temperature	-15°C to +55°C (+5°F to +131°F)		
Waterproof	Resistive against driven water, in compliance with IPX5		

CONNECTIONS



EQUIPMENT LIST

Standard equipment

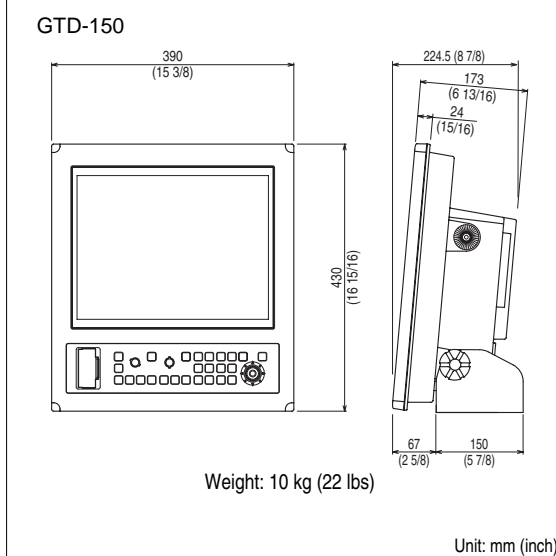
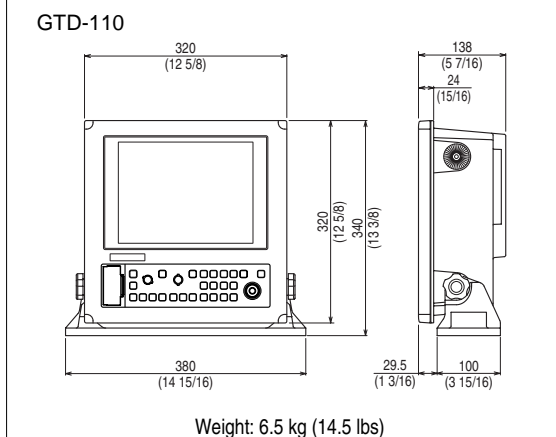
Display	GTD-110/GTD-150	With hard cover	1
DC power cable	CW-253-2M	5P connector fitted one end	1
Fuse	F-7161	10 A	1
Operation manual	93151542		1

Options

GPS sensor	GPS-10A	For GPS signal reception	1.6 kg
DGPS sensor	KBG-2	For GPS signal reception	1.8 kg
Junction box	JB-10	1-IN/3-OUT	0.42 kg
Power rectifier	PS-003A	With two 5 A fuses	2.8 kg
AC power cable	VV-2D8-3M	Flying leads on each end	3 m

DIMENSIONS AND WEIGHT

Display unit



* Specifications subject to change without notice.

KODEN

10.4-inch/15-inch Color LCD
GPS Plotter

GTD-110/150

Designed for
C-MAPNT



The key words are:

- Bright
- Fast
- Crisp
- Simple

www.koden-electronics.co.jp

KODEN
KODEN ELECTRONICS CO., LTD.
OVERSEAS DEPT.
13-24, TAMAGAWA 2-CHOME, OTA-KU
TOKYO, 146-0095 JAPAN
TEL: +81 3 3756-6918
FAX: +81 3 3756-6831
E-MAIL: overseas@koden-electronics.co.jp
www.koden-electronics.co.jp

Certified to ISO 9001 (TUV PRODUCT SERVICE)

Safety precaution
To ensure proper and safe use of the equipment, please carefully read and follow the instructions in the OPERATION MANUAL.

Agenzia
ufficiale per
l'Italia :

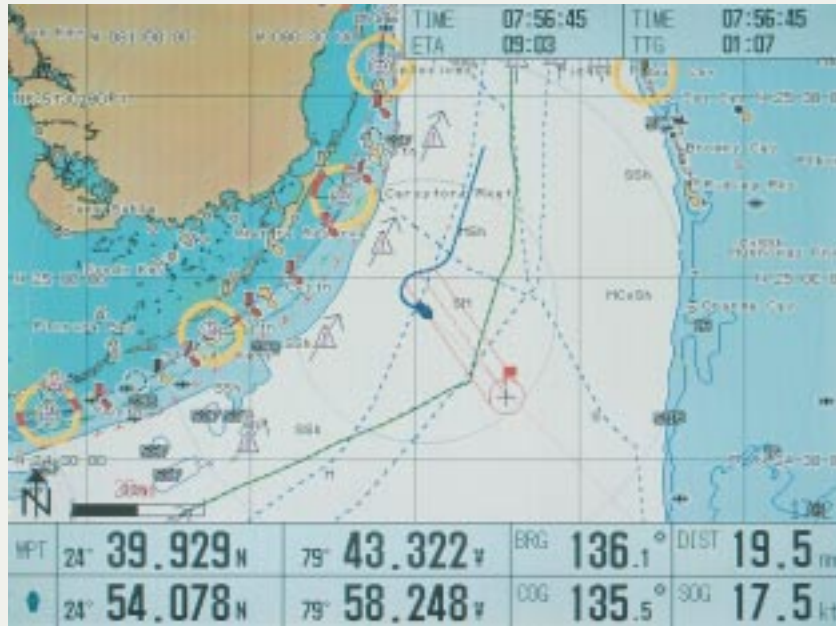
Apelmar
Technology S.r.l.

Telefono 010 870058 r.a.
Telefax 010 870248
e-mail: apelmar@koden.it
<http://www.koden.it>

OGTD110/150-00 02 XI SI 2Y1
OGTD110/150-03 05 IV KK 4Y5
PRINTED IN JAPAN

Introducing the new KODEN GPS Track Display GTD-110/150, the best choice for safe navigation and effective fishing in the new era!

Features



Loran-C LOP display

● The LOP display

The LOP (Line Of Position) display is still widely used among many fishermen in the world. The GTD-110/150 has the facility to show the Loran-C LOP display, easily switched from Lat/Lon display.



● Operation "easy"

Rotary controls and keypads, these operating devices are easy to find and straightforward to use. Further, symbol marking, track plotting and picture setting functions are individually grouped on the operating panel, permitting quick and effective operations. The newly added CANCEL key allows you to return to the last setting when you press a key by mistake.

● High brightness, wide angle Liquid Crystal Display

The GTD-110/150 offers a steady, crisp, flicker free image on a 10.4 inch (GTD-110) or 15 inch (GTD-150) high grade Liquid Crystal Display in a broad range of lighting conditions, bold contrast in daytime and finely defined in nighttime. The display has a wider viewing angle allowing monitoring from the sides as well as up or down.

● Electronic seamless data base charts

Seamless technology offers large area coverage at constant range scale, with the best available details (C-Map NT electronic chart necessary)

● Fast picture update

Panning and scrolling are two of the most frequently used operations in the track display. The GTD-110/150 offers the fastest panning/scrolling speed in this class to date.

● Various marks and greater numbers of ship's track

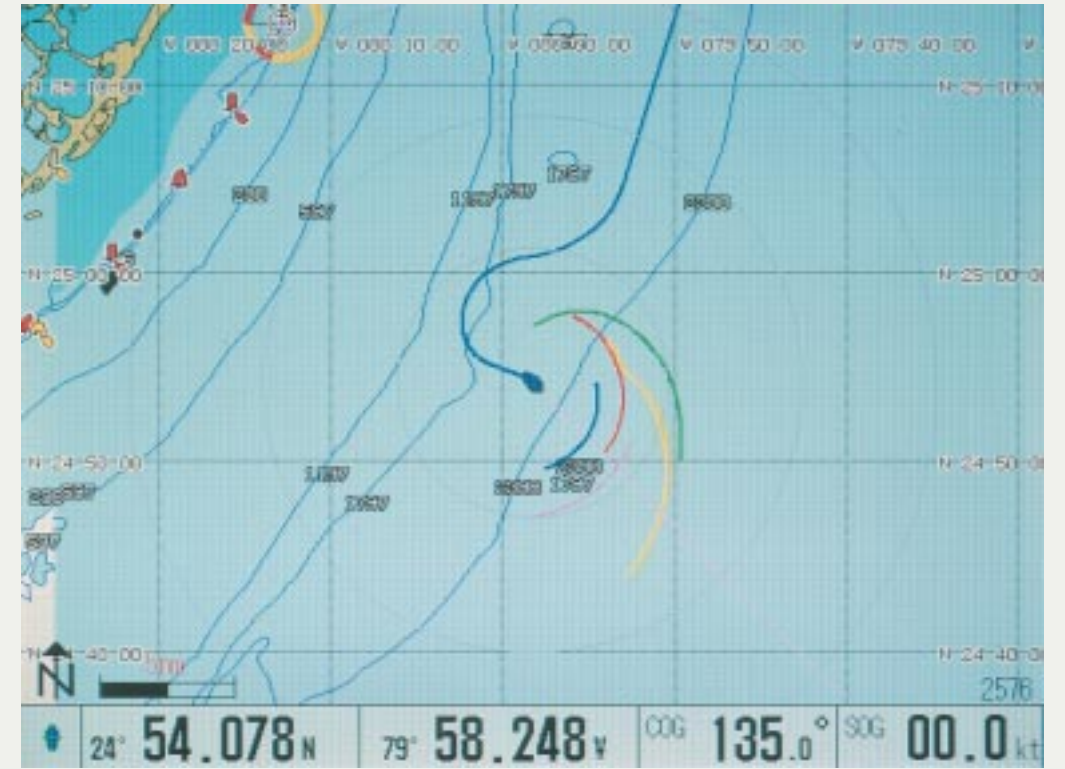
Marks are available in 7 different shapes and 2 kinds of size, up to 8,300 marks are available in total. Ship's track is available in 2 kinds of thickness and 7 colors, up to 49,000 points can be plotted on the ship's track. (7000 points in 7 groups/tracks are also possible)

● Radar Plotting

This feature permits tracked radar plots to be overlaid on the screen, when a radar set with an ATA (Automatic Plotting Aid) function is connected to the GTD-110/150. The maximum numbers of ship's track are 10, with 1000 plotting points each. Each track can be modified in terms of mark size, track thickness, color, course line display yes/no, etc.

Display example:

This picture shows the ship's tracks of own ship with ship's profile mark and other ships in different colors.



● Compact and waterproof

Where to install? The choice is yours. Track Display can be installed anywhere on the boat, on the table, tilted console or even on the fly bridge, thanks to a strengthened waterproof design, conforming to the IPX5 requirements.

● Data security

Even in the event of a system lock up or crash, all storage data is securely protected from accidental erasure by a double layer memory.

● The POB marking

This feature allows instant marking of the location of an accident such as man overboard at a press of the POB (Person Over Board) key. This key can also be used as an instant event key.



Navigate with confidence!